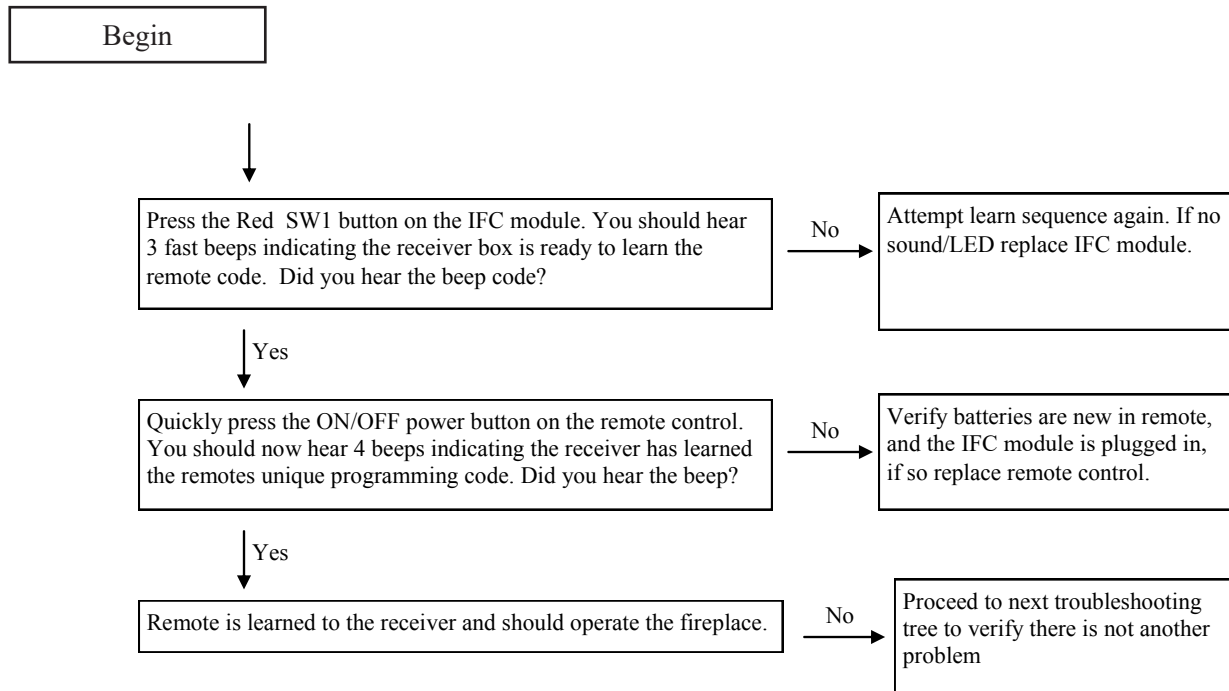


H SERIES MODELS

HVF 42, HVF 60 & HVF 72

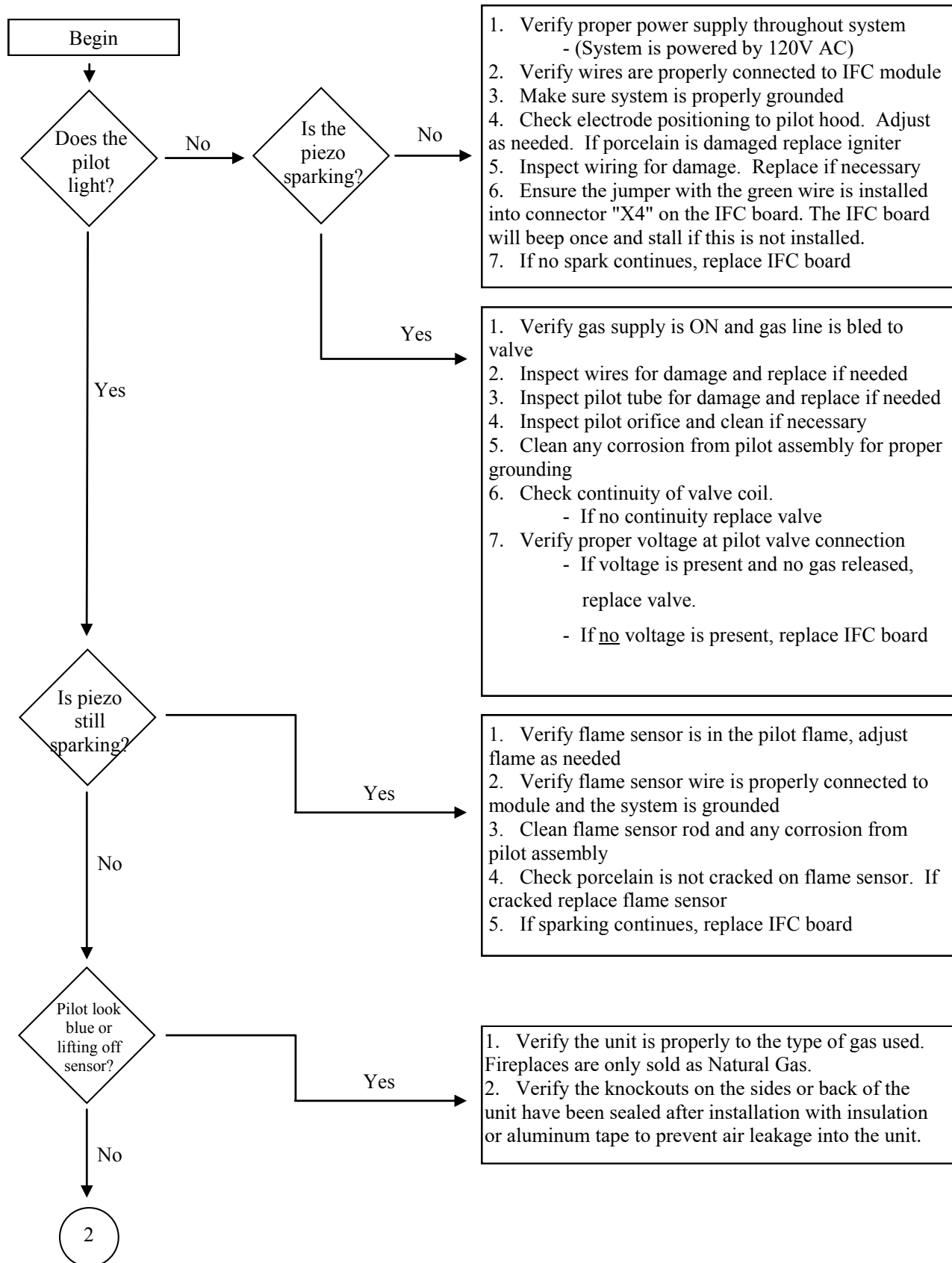
Single-Sided See-Through
Corner Style Peninsula
3-Sided

Remote/Receiver Not Synchronized

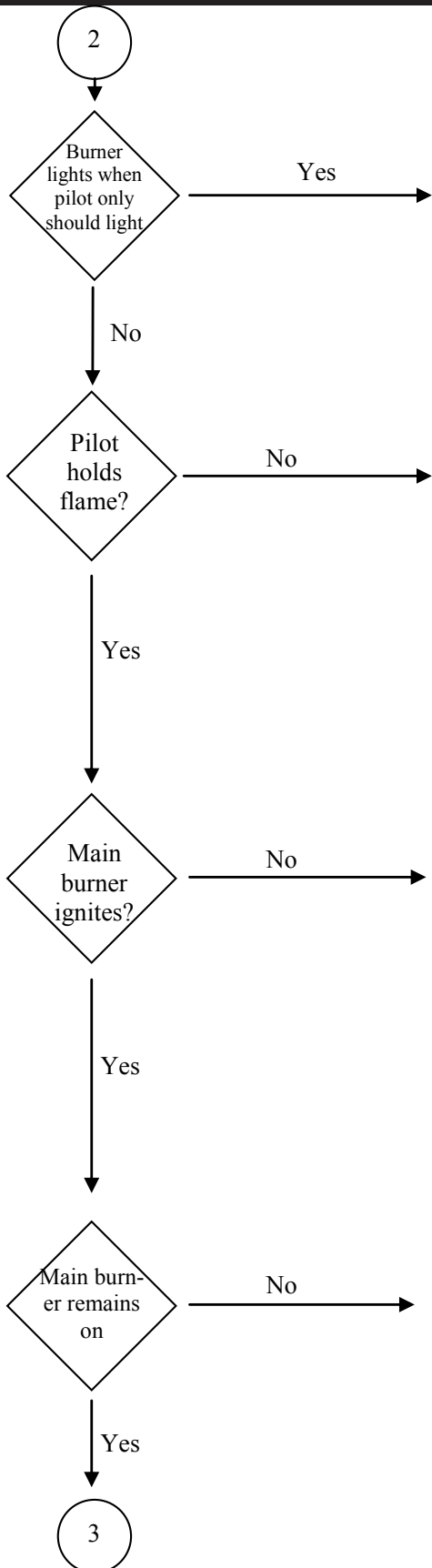


EUROPEAN HOME TROUBLESHOOTING GUIDE

Troubleshooting



EUROPEAN HOME TROUBLESHOOTING GUIDE



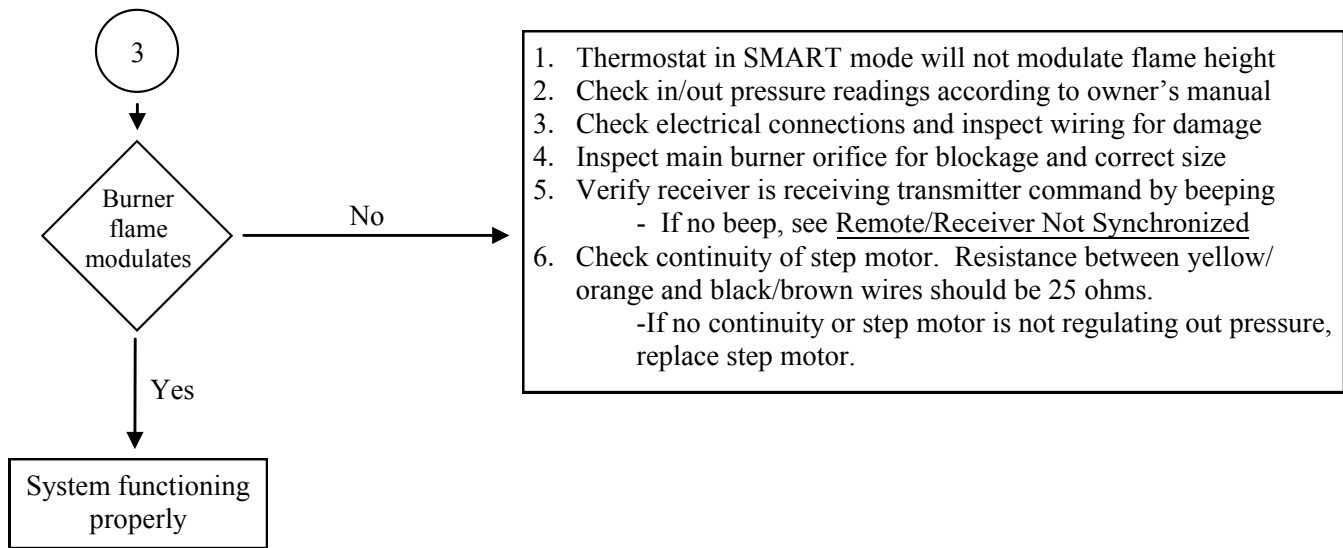
1. Verify transmitter is not powered on or in thermostat mode calling for heat. Display should say OFF next to thermometer image on display for thermo off.
2. Ensure all electrical connections are secure based on the wiring diagram
3. Verify proper voltage at the main valve connection (EV2 green).
 - If voltage is present replace IFC board
 - If voltage is not present replace gas valve (solenoid not closing)

1. Verify pilot flame makes full contact with flame sensor
 - Verify gas pressure on full capacity
 - Verify turbulence is not pushing flame off flame sensor
2. Clean the flame sensor and inspect wiring for damage
3. Verify pilot assembly is properly grounded and pilot hood is brushed clean of debris and securely pressed down.
4. Replace flame sensor
5. Check voltage at pilot valve connection (EV1 orange)
 - If no voltage present when calling for pilot, replace IFC board
 - If voltage is present, replace gas valve (valve not opening)

1. Verify THERMOSTAT mode is turned off. It is normal for the burner to turn off if THERMOSTAT mode is on.
2. Verify electrical connections are properly connected according to the wiring diagram and replace any damaged harnesses
3. Verify the pilot flame is properly directed to ignite the burner
4. Verify piezo is not sparking if so, go back to Piezo Still Sparking
5. Verify proper components are installed for type of gas used
6. Check continuity of the main burner coil.
7. Check for voltage at the main burner connection (EV2 green)
 - If voltage is present replace gas valve (not opening)
 - If no voltage is present replace IFC board

1. Verify THERMOSTAT mode is turned off. It is normal for the burner to turn off if THERMOSTAT mode is on.
2. Verify that the knockouts on the back or side of the unit have been sealed to prevent air infiltration from the wall.
3. Verify electrical components are properly connected according to the wiring diagram and replace any damaged harnesses
4. Verify pilot flame makes contact with flame sensor. Clean flame sensor of any debris or silicone film.
5. Verify gas pressure on full capacity is according to manual
6. Check for voltage at the main burner connection (EV2 green)
 - a. If voltage is present when drops out, replace gas valve
 - b. If no voltage, replace IFC board

EUROPEAN HOME TROUBLESHOOTING GUIDE



EuropeanHome

EUROPEAN HOME

a division of Europa Ja, Inc.

30 Log Bridge Road

Building 300 - Suite 303

Middleton, MA 01949

www.europeanhome.com