

COOL WALL INSTALLATION GUIDE - VENT FREE



European Home has developed four distinct installation methods to ensure that the wall above your vent free fireplace stays cool enough for the mounting of most electronics such as a television. In addition to mounting a TV, utilizing **Method 4: Double Front Wall** (Page 4) you can now bring virtually any material down to the edge of your fireplace including wood veneer and wallpaper. None of these installation methods effect overall heat output, so you get the same efficient fireplace with the added bonus of design flexibility.



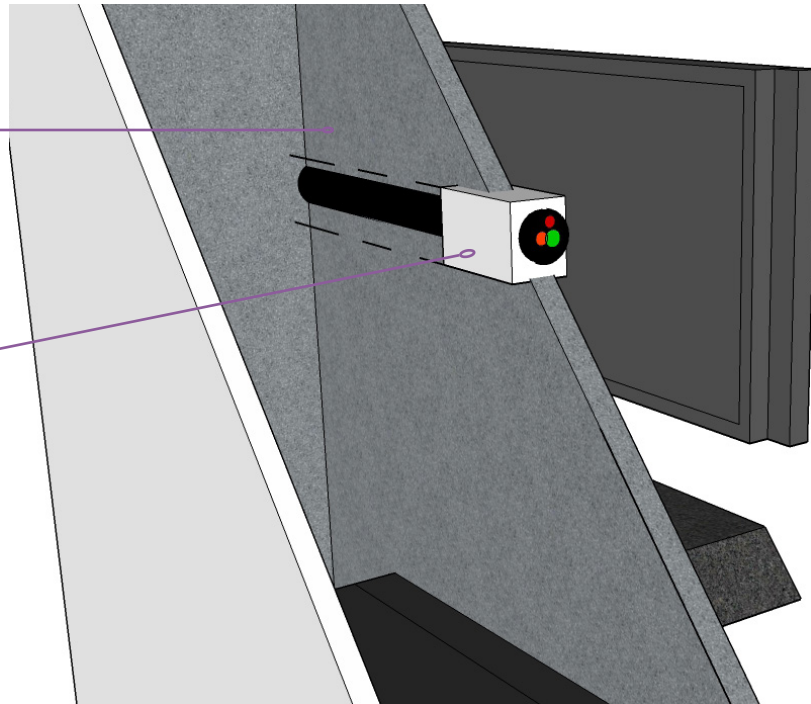
Example of **Method 2: Recessed Television**

COOL WALL INSTALLATION GUIDE - VENT FREE

Protecting your Electronics (applies to all installation methods)

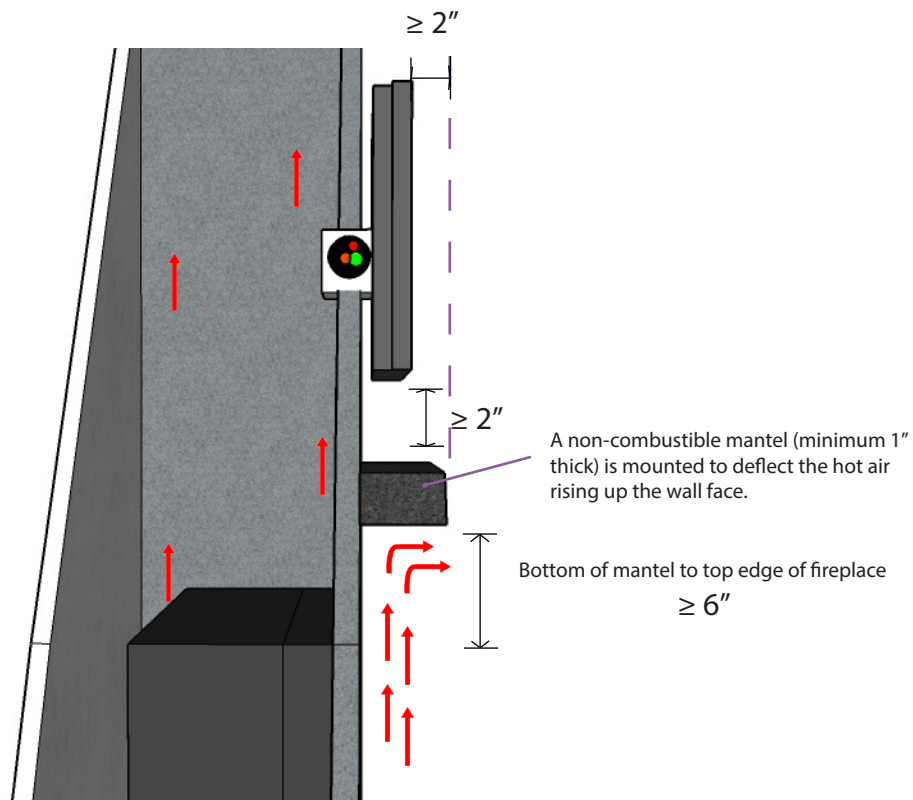
The entire weight of the electronic device must be supported by the chase or a separate framework. No weight may be supported by the fireplace.

Wrap electronic wires in non-combustible insulation or hidden in false wall or box behind the electronic device when running inside the chase.



Rear View

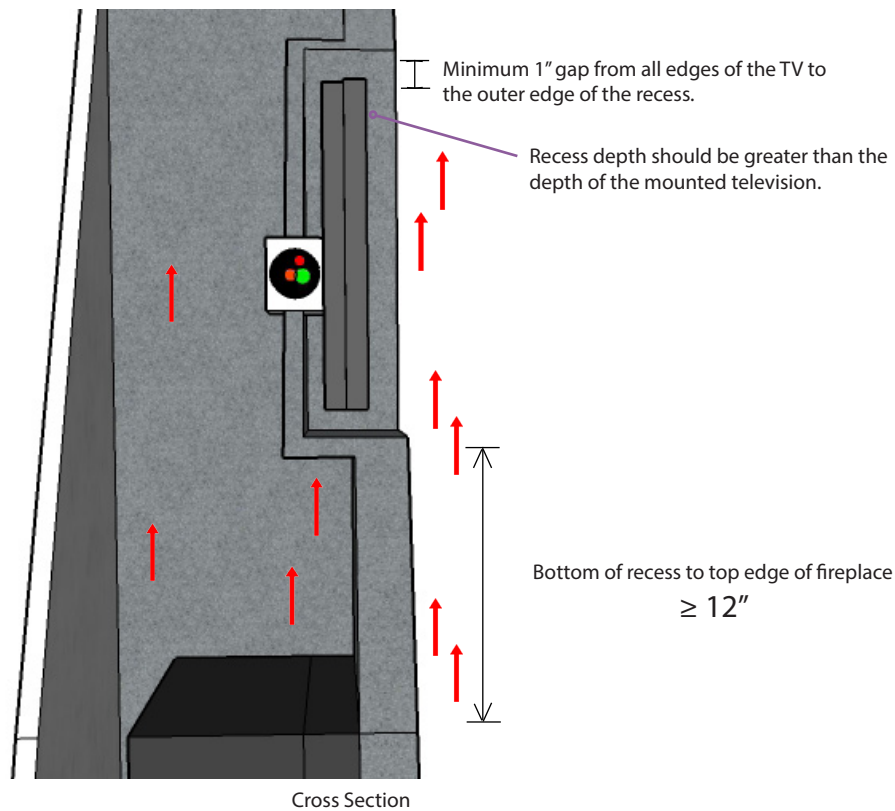
Method 1: Deep Mantel Without Recess



Cross Section

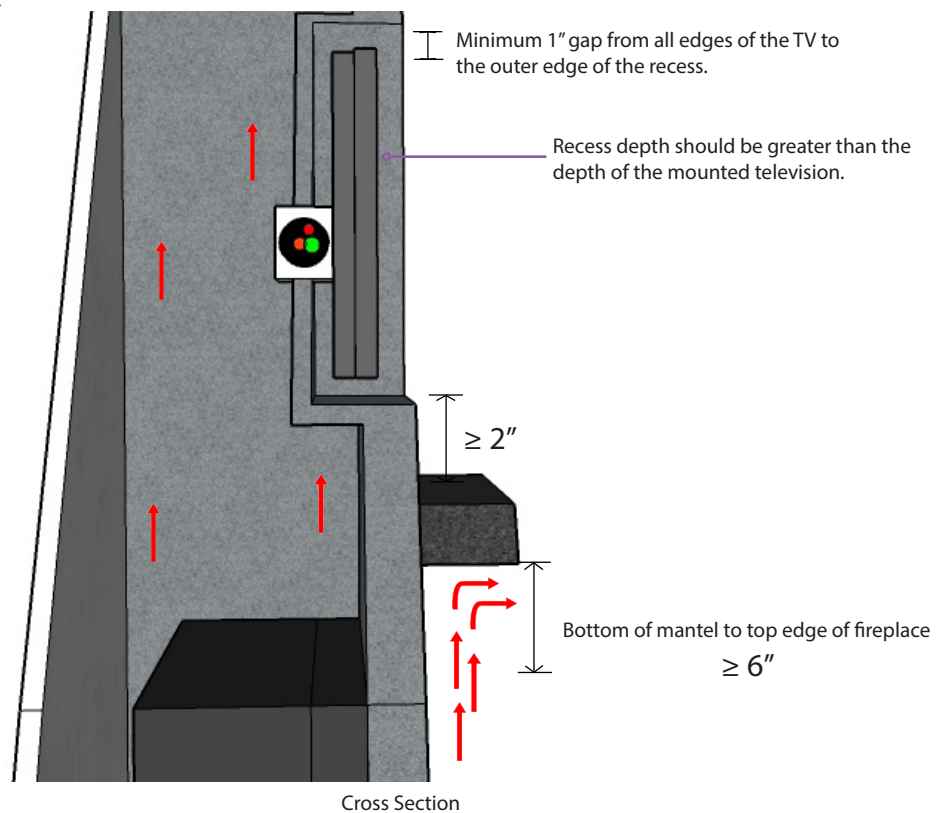
COOL WALL INSTALLATION GUIDE - VENT FREE

Method 2: Recessed TV



Method 3: Recessed TV + Mantel*

**This option offers the greatest protection for your electronics.*

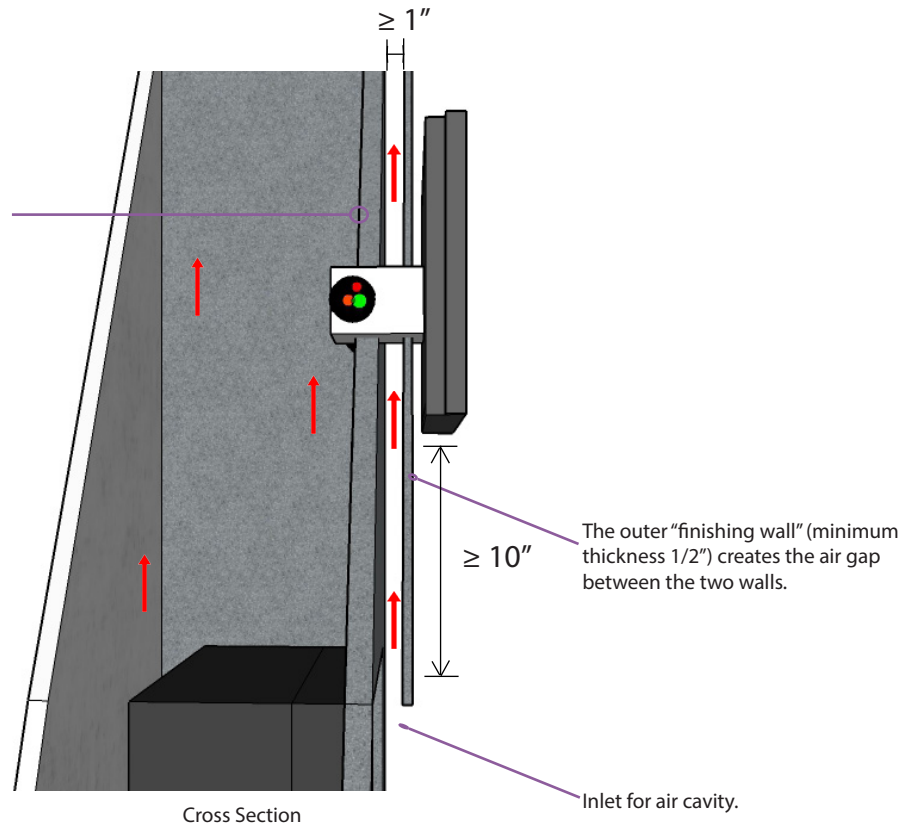


COOL WALL INSTALLATION GUIDE - VENT FREE

Method 4: Double Front Wall

**Use this method if you would like to bring combustible finishing (such as wood veneer or wallpaper) to the edge of the fireplace face.*

The inner wall should have a minimum depth of 1".



30 Log Bridge Road
Building 300 - Suite 303
Middleton, Ma 01949
www.EuropeanHome.com

**Call our Technical Team if you have any Questions:
781-324-8383 ext. 3**

Please Note: Some electronics manufacturers specify that their products should not be installed on, near or above a heat source. Consult your manufacturer's specifications.

Mounting an electronic device is ultimately the owner's decision and responsibility. European Home will not be held liable for any adverse effects of heat on electronic devices located near a European Home fireplace.