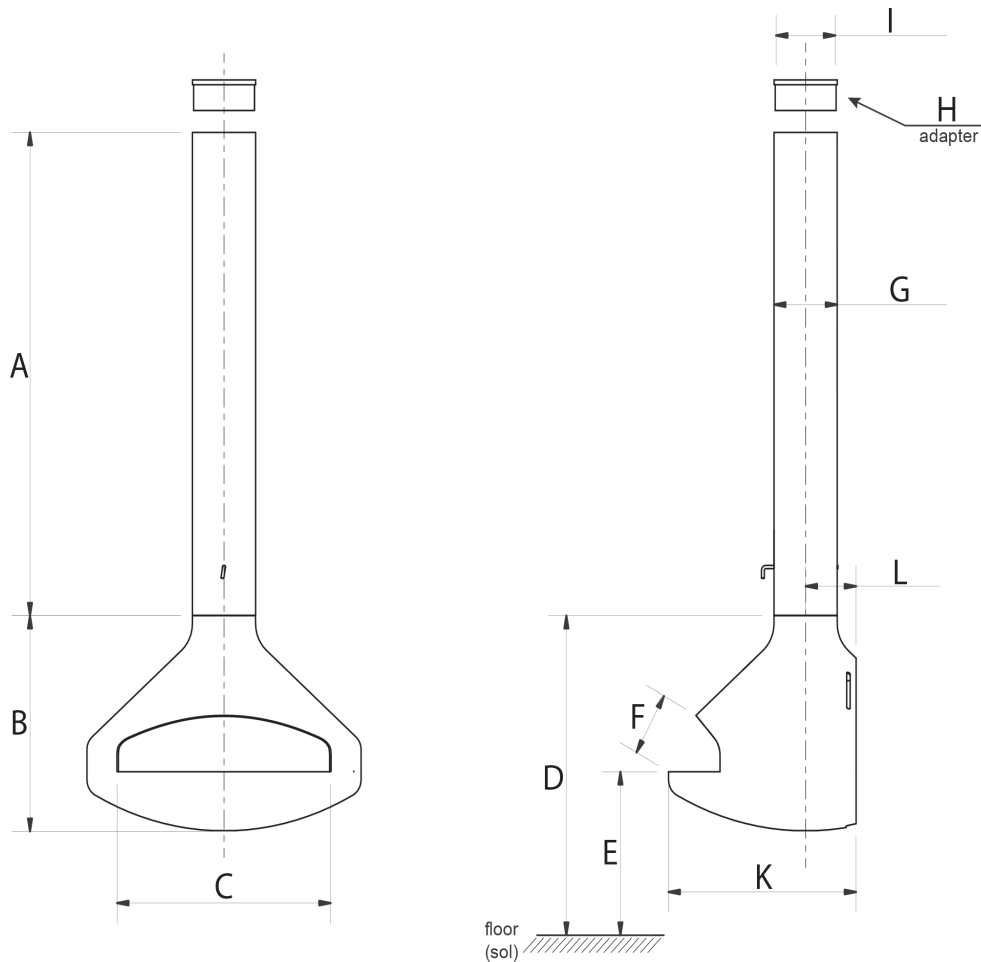
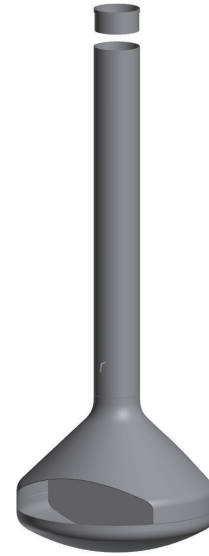
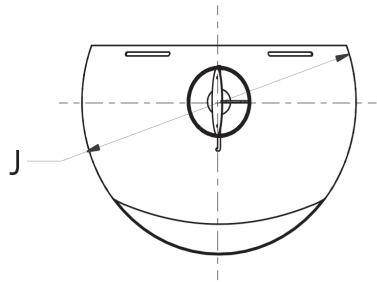




PAXFOCUS - Indoor

Note : imperial measurements are rounded from metric



	A	B	C	D	E	F	G	H	I	J	K	L
INCH	67 1/2"	26 3/8"	29 1/8"	40 9/16"	20"	7 7/8"	Ø 8 5/8"	8"	Ø 8 1/16"	Ø 37 3/8"	25 9/16"	6 7/8"
[MILLIMETER]	[1715]	[670]	[740]	[1030]	[500]	[199]	[Ø 219]	[203]	[Ø 205]	[Ø 950]	[650]	[175]