

E-FX SLIM LINE 750S ELECTRIC FIREPLACE



EuropeanHome

Manufacturer and Importer of high-end Gas, Wood and Electric Fireplaces



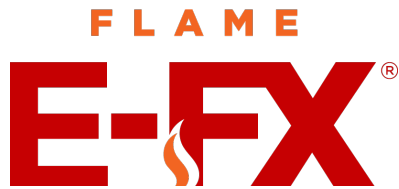
Award-winning designs
imported from the UK



SPECIFICATIONS

FLAME EFFECT	Powered by Electricity
POWER SUPPLY	15 Amp, 120 Volt Circuit
WEIGHT	77 lbs.
VIEWABLE OPENING	28" W x 15" H
HEAT OUTPUT	1,500W (5,115 BTU/hr)
CONFIGURATION	Single-Sided
VENTING	N/A
FRONT	UHD Non-Reflective Glass
INTERIOR	Non-Reflective Glass
REMOTE CONTROL	Remote, Google Home, Alexa
CERTIFICATION	UL 2021:2015Ed.4+R:02Feb2021, CAN/CSA E60335-2-30:2013Ed.3+A1;A2

PRODUCT OPTIONS & ACCESSORIES



- Ultra Black 3-dimensional realism.
- Pre-set and user favorite programmable animations.
- Customizable colors.
- Variable flame speed.
- Variable lighting control.
- Fully animated and illuminated LED log effects.
- Remote and App controlled.
- Manual keypad.
- Works with Google Home and Amazon Alexa.
- Hidden heater for optional heat.

FIREPLACE MODEL

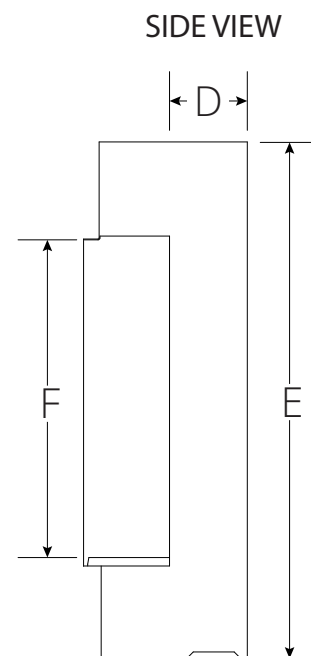
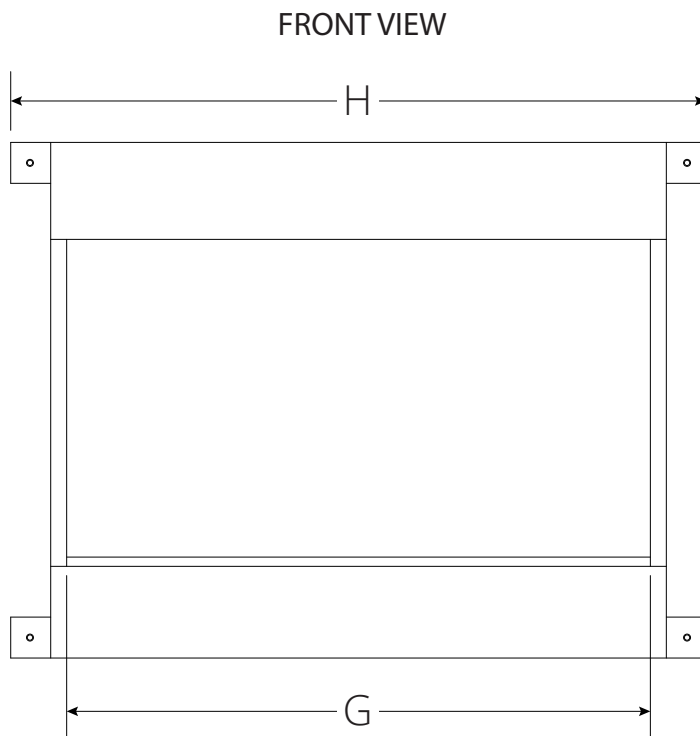
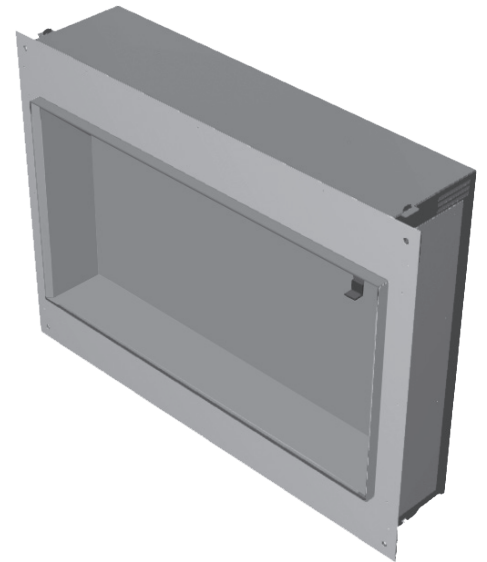
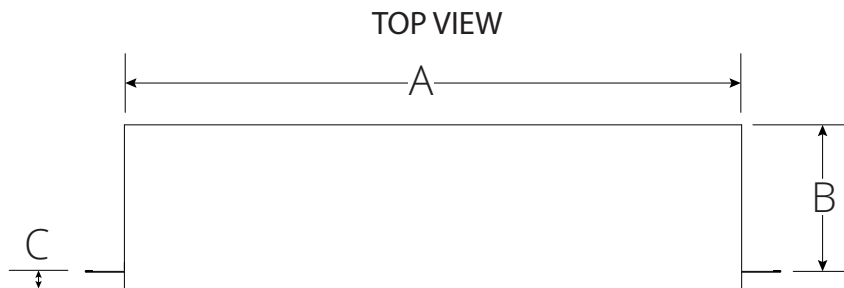
PRODUCT	ITEM CODE
E-FX SLIM LINE 750S	FLR-FP-EFX-SL-750S

FIRE MEDIA



LOGS with ANIMATED EFFECTS

CUT SHEET



LETTERS	A	B	C	D	E	F	G	H
INCHES	30"	7"	3/4"	3 3/4"	24 7/8"	15"	28"	33 1/8"
[MILLIMETERS]	[764]	[178]	[19]	[95]	[631]	[381]	[711]	[842]

All products are protected by patents. Registered design and intellectual property rights.
Flamerite Fires Ltd will Protect these rights.

All specifications are correct at time of publishing and are subject to change.
Issues No. 1

CAD files are available by clicking [HERE](#) or

