

# REFLECTIVE GLASS AND CONCRETE PANELS

**Included:**

- Glass Concrete Styled Panels
- Clips to secure panels
- Self-tapping screws
- Gasket

All panel kits include hardware kit - EH-SA-PAN-HWK (8 clips and 10 screws) for panel installation.

1. With the hearth tray in place, slide the gasket material between the rear wall and the hearth tray. This will prevent the concrete styled panels from slipping down. (Figure 1)

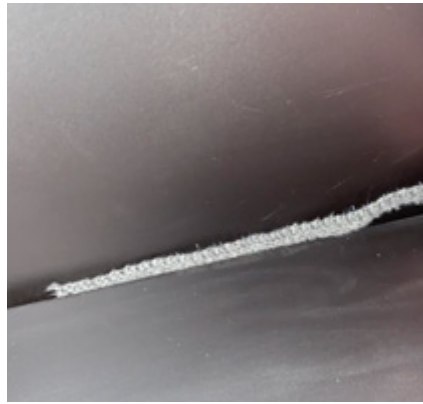


Figure 1

2. With the panel held in position, hold the slotted "L" shaped clip to the ceiling and the other end against the glass. Leave 1/16" space to allow for expansion. Use the self-tapping screw to secure the clip to the ceiling (Figure 2). The slot will allow you to adjust the clip. The panels will rest on top of the hearth tray.

*Note: Install the left and right side panels first.*

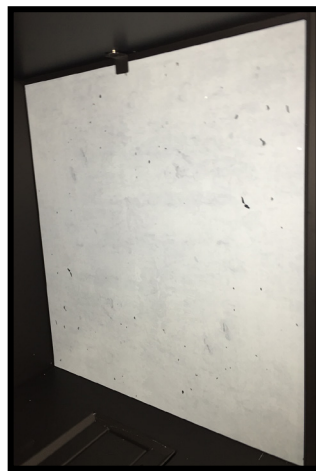


Figure 2

3. Arrange the rear panels (as above with one clip supporting two panels). The middle panels will be larger than the panels at left and right of the rear wall.